



## Acme Sanitary Ware Co Ltd


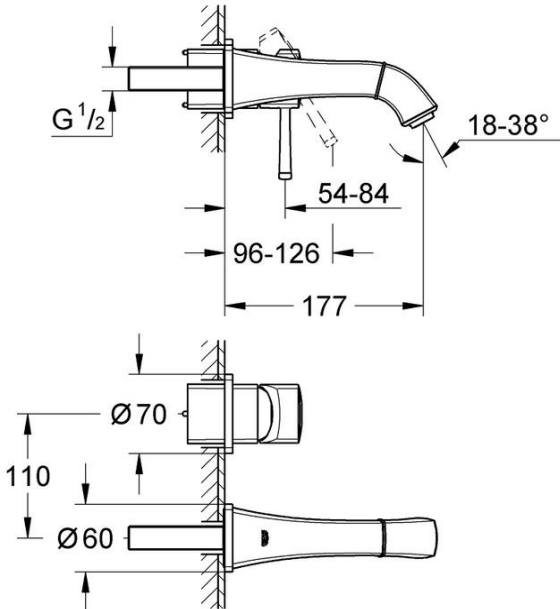


Acme Building, 22-28 Nanking Street, Kowloon, Hong Kong  
 Tel: 2388 7171 Fax: 2710 8012  
 E-mail: acme@acmesanitary.com.hk  
 Website: www.acmesanitaryware.com.hk



Pure Freude  
an Wasser

PROJECT		REF		REV	ITEM CODE	
LOCATION		DATE			PAGE	

## SANITARY WARE SPECIFICATION SHEET

Item Descriptions	GROHE (Germany) "Grandera" Wall mounted 2-hole basin mixer S-Size (Projection 177 mm)	<div>Illustration/ Drawing</div> <div></div>
Dimensions	L177 x W110 x H70 mm	
Model	19929IG0	
Finish / Material	Chrome Plated & Gold	
Country of origin	Germany	
Manufacturer	GROHE Limited	
Supplier	Acme Sanitary Ware Co. Ltd Mr. Eric Wong/ Mr. Don Yuen	<div></div>
Contact Tel/Fax	(852) 2388-7171 / (852) 2710-8012	
E-mail	acme@acmesanitary.com.hk	
Website	www.acmesanitary.com.hk	
<div>"Grandera" 2-hole basin mixer S-Size</div> <div><ul style="list-style-type: none"><li>· wall mounted</li><li>· set for final installation for 23 319 000</li><li>· without concealed body</li><li>· <b>GROHE StarLight</b> chrome finish</li><li>· <b>GROHE EcoJoy</b> technology for less water and perfect flow</li><li>· <b>GROHE AquaGuide</b> adjustable mousseur 5.7 l/min</li><li>· centre distance 110 mm</li><li>· projection 177 mm</li></ul></div> <div><div><div>19929000</div></div><div><div>19929IG0</div></div></div>		
		<div>Colour options:</div> <div><div>● 000   StarLight Chrome</div><div>● IG0   Chrome/Gold</div></div>

Note:

\* All information of the above is for the reference only. No prior notice is made if any changes.



## Acme Sanitary Ware Co Ltd

Acme Building, 22-28 Nanking Street, Kowloon, Hong Kong  
Tel: 2388 7171 Fax: 2710 8012  
E-mail: acme@acmesanitaryware.com.hk  
Website: www.acmesanitaryware.com.hk



Pure Freude  
an Wasser

PROJECT		REF		REV	ITEM CODE	
LOCATION		DATE			PAGE	

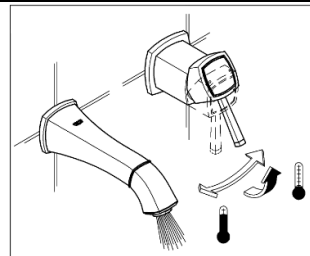
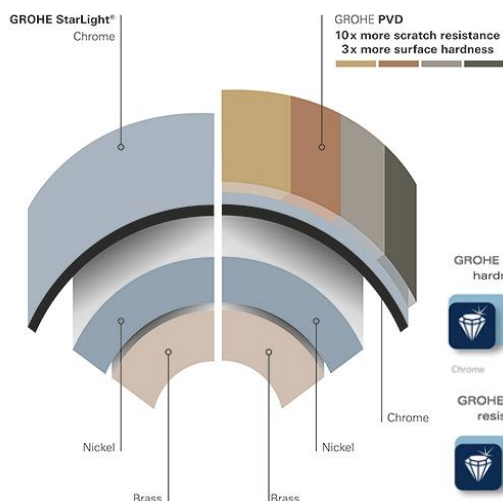
## SANITARY WARE SPECIFICATION SHEET

### GROHE GRANDERA

#### TOMORROW'S GRAND STYLE

The GROHE Grandera collection is both a homage to an age of grandeur long past and an affirmation of modern sensibility, combining the highest standards of quality and craftsmanship with a love of detail and comfort.

Stylistically, the Grandera collection can be combined with a wide range of bathroom furnishings, with the added flexibility of two colors – chrome and chrome / gold.



GROHE surface hardness



Chrome PVD

GROHE scratch resistance



Chrome PVD



#### GROHE STARLIGHT

Made-to-last surfaces ranging from precious matt to shiny like a diamond.



#### GROHE ECOJOY

Save precious resources and enjoy 100 % water comfort.



#### AQUAGUIDE

Variable spout end for adjustment of water flow.



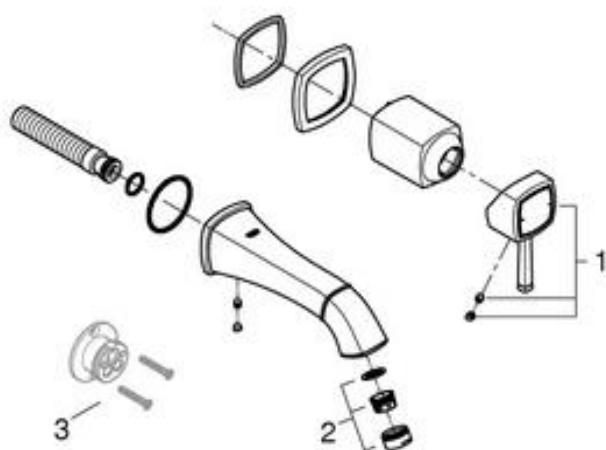
#### Easy to clean thanks to the GROHE StarLight chrome coating

Just wipe the tap down with a dry cloth – the ultra smooth surface finish is scratch resistant and ensures a lasting luminous sheen. You'll save plenty of time cleaning while your tap always looks shiny and new.



#### GROHE EcoJoy with water-saving function for reduced consumption

GROHE EcoJoy reduces water consumption by up to 50% without compromising on performance. Whenever you turn on your tap, you will enjoy a full jet of water while saving money nonetheless.



Pos.-nr.	Prod. description	Order-nr.
1	Lever	46833IG0
2	Flow straightener	46837G00
3	Extension	46627000*

\* Optional accessories

Note:

\* All information of the above is for the reference only. No prior notice is made if any changes.